

Are there any risks?

- You will receive a **small amount of radiation** during the test. This **radiation is carefully controlled** and kept to a **minimum**.
- There is a **risk** that a **small amount of food and drink** may enter your **airway**. If there are concerns regarding this the Speech and Language Therapist can **alter the consistency** or the **assessment** would be **stopped**.

When do I get results?

- A Specialist Speech and Language Therapist and a Radiographer will look at the X-ray carefully during your appointment.
- The therapist will talk to you about the X-ray and give you some **advice about your eating and drinking**.
- The therapist will **send you a report** explaining the results of the test.

If you have any **questions** about your **appointment** please **speak to your Speech and Language Therapist**

Or

Lincolnshire Community Health Services **NHS**

NHS Trust

Telephone 01522 573069



The Trust endeavours to ensure that the information given here is accurate and impartial.

If you require this information in another language, large print, audio (CD or tape) or braille, please email the Patient Information team at patient.information@ulh.nhs.uk



Videofluoroscopy

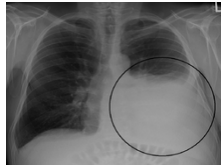
A videofluoroscopy is a moving X-ray image of your head and neck

Radiology Appointments Centre
Lincoln County Hospital
01522 573069
www.ulh.nhs.uk

The X-ray video allows us to see what is happening in your mouth and throat when you eat, drink and swallow.

Why do you need a videofluoroscopy?

- **Food and drink** might be going down the **wrong way** and getting into your airway without you feeling it. This is called **silent aspiration**.



Example chest x-ray

- During the test we can see if **some food and fluid consistencies** are **easier** for you to swallow.
- We can check whether **changing the position** of your head or body helps you to **swallow safely**.
- We can identify whether you would benefit from **rehabilitation** to improve your swallow safety.

What do you need to do?

- **Let us know** if there is any possibility that you are **pregnant**.
- **Let us know** if you have any disabilities or special **seating** needs.



- **Bring** your **dentures** with you if you wear them.



- **Bring** any special **cups** or **cutlery** that you use.



- We may ask you to **take off earrings or necklaces** as they can affect the X-ray image.

Where do you go?

- The **X-ray Department** at **Lincoln County Hospital**.
- Go to the **main hospital entrance**. Follow the signs to the **X-ray department**.



What happens during the test?

- You will **sit next to** an **X-ray** camera.
- A **Speech and Language Therapist** may give you something to **eat and/or drink**.
- Food and drink has a **special substance added** (barium or omipaque) so it can be seen on the X-ray.
- The substance can make **drink or food taste unusual**.
- This test does **not** involve any tubes and it will **not** hurt.
- Your appointment will take about **30 minutes**.

